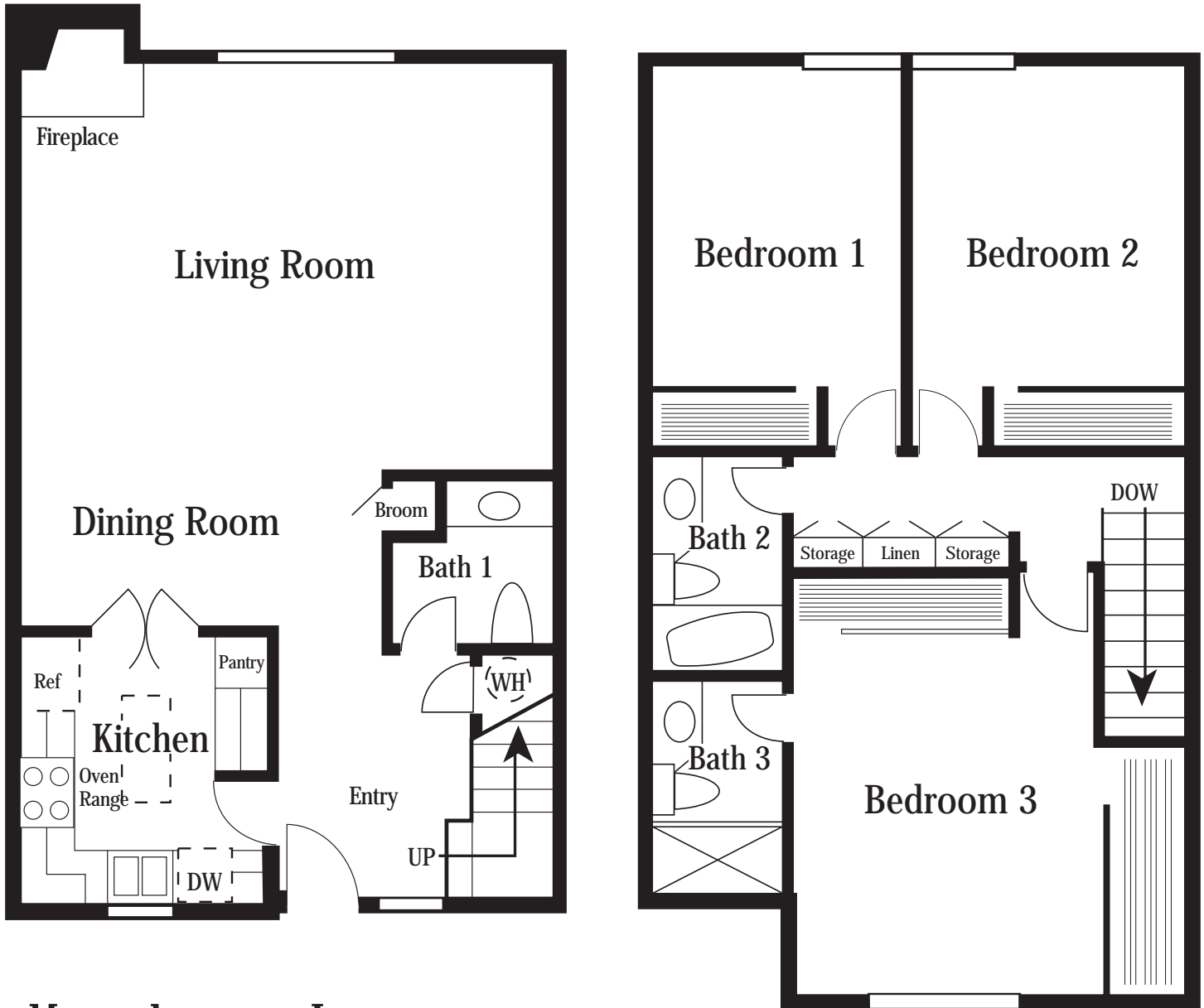


# Plan IV ~ 3 Bedroom, 2.5 Bath Townhome

Opens into a large separate entryway area with a half bath downstairs. The enormous living room offers a wood burning fireplace and a full size sliding glass door that opens to the outside patio. The dining room area has a ceiling fan and is conveniently off the kitchen and the living room.

The master suite has two full length closets and features a private shower/vanity area. Two upstairs bedrooms offer spacious closets. The hallway features ample linen and storage cabinets. The second bath is centrally located and offers a shower/bath combination.

Approximately 1,518 square feet



## Hearthstone I

APARTMENTS & TOWNHOMES

2243 East Santa Clara Avenue  
Santa Ana, California 92705

(714) 547-0239 • (714) 547-0169 Fax